

Queen's Wharf Brisbane will transform the Brisbane CBD through its Queensland inspired design that will include a mix of open public space and river front access; 50 new bars and restaurants; a publicly accessible Sky Deck; nightlife and family entertainment; local and international retail brands; as well as world-class five and six-star hotel brands.

## WANT TO KNOW MORE ABOUT QUEEN'S WHARF BRISBANE?

Subscribe to the monthly e-newsletter by visiting [www.destinationbrisbaneconsortium.com.au](http://www.destinationbrisbaneconsortium.com.au) and follow the links or follow the [Queen's Wharf Brisbane Facebook page](#).

TREASURY  
BRISBANE

130 WILLIAM ST, BRISBANE CITY QLD 4000  
1800 506 889 | [WWW.TREASURYBRISBANE.COM.AU](http://WWW.TREASURYBRISBANE.COM.AU)

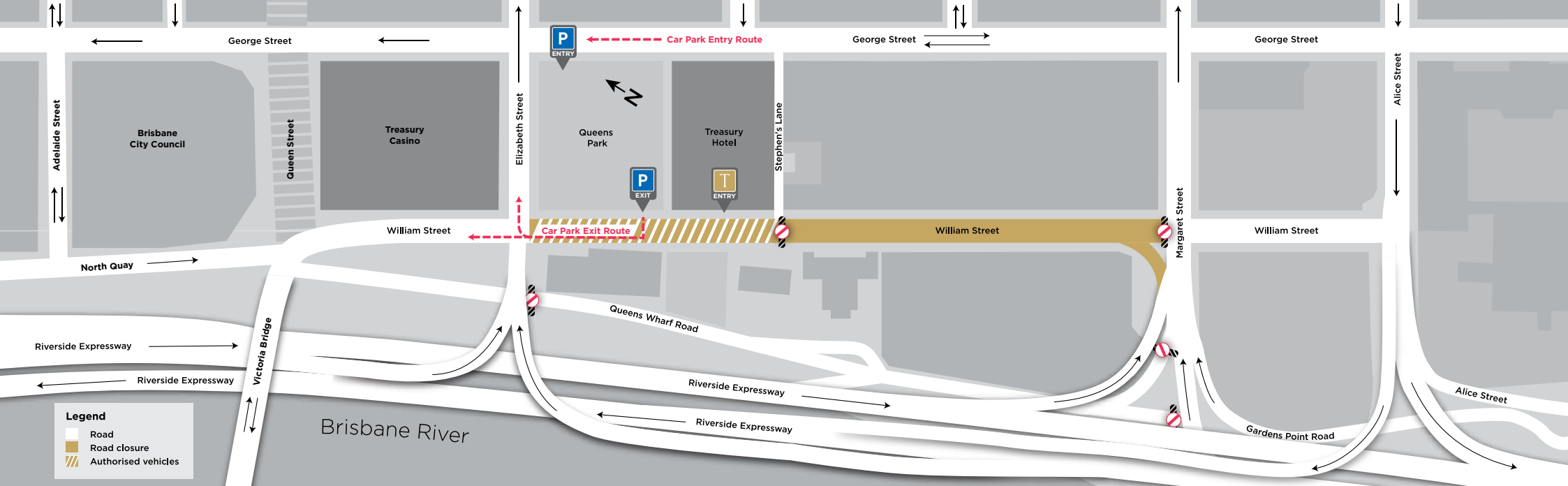
# IMPORTANT INFORMATION FOR MEMBERS AND GUESTS

## TRAFFIC AND TRANSPORT UPDATE

TREASURY  
BRISBANE

© Destination Brisbane Consortium. All rights reserved. Artist's impression. Subject to planning approvals.

© Destination Brisbane Consortium. All rights reserved. Artist's impression. Subject to planning approvals.



# TRAFFIC AND TRANSPORT UPDATE

**Construction activities will start in January 2017 for the core area of the Queen's Wharf development, which will house the iconic arc shaped buildings, hotels, restaurants and extensive public spaces, and will take approximately six years to build.**

To enable construction activities and safely manage the project precinct, there will be changes and improvements to current traffic and transport routes and include roads, car parking, pedestrian connectivity, public transport and bikeways.

Please review the important information enclosed to ensure your access to Treasury Brisbane is as seamless as possible.

## YOUR ARRIVAL TO TREASURY BRISBANE

### By Car

From 1 January 2017, a number of traffic routes and road changes will be implemented in and around the CBD. However, entry to the casino via George Street will remain unchanged and guests will still be able to access the hotel via the main entrance on William Street.

### By Public Transport

Access to Treasury Brisbane via public transport has been made easier, with improvements made to scheduling and bus services in and around the CBD. Please visit the TransLink website [www.translink.com.au](http://www.translink.com.au), download the **MyTransLink App** or call **13 12 30** for information about current bus services. City train and access to ferry services will not be affected.

## YOUR DEPARTURE FROM TREASURY BRISBANE

### By Car

A new right turn on exit will be introduced as you leave the car park, allowing you to proceed to Victoria Bridge or Elizabeth Street.

### By Public Transport

Please refer to the TransLink website for the most suitable public transport routes available.

## FOR FURTHER INFORMATION

To stay informed about traffic conditions and changes visit [www.131940.qld.gov.au](http://www.131940.qld.gov.au) or call **13 19 40**.

Please visit the TransLink website [www.translink.com.au](http://www.translink.com.au), download the **MyTransLink App** or call **13 12 30** for information about current bus services.